



September 16, 2025

To: All Plan Holders

From: Jeff van den Eikhof, PE
City Engineer

RE: 303 Obispo Site Improvements – EV/Bus Charging Facility Project

ADDENDUM NO. 2

NOTICE TO ALL CONTRACTORS SUBMITTING BIDS AND TO ALL PLANHOLDERS:

You are hereby notified of the following changes, clarifications or modifications to the contract documents. This addendum shall supersede the original contract documents and subsequent addenda. Wherein this addendum contradicts the original contract documents and previous addenda, this addendum shall take precedence. All other conditions shall remain unchanged. The change specified below shall become a legal part of the original contract documents.

A. CHANGES AND/OR CLARIFICATIONS TO THE BID DOCUMENTS AND PLANS

1. The Bid Schedule is replaced in its entirety with the attached Bid Schedule.
2. All references to Hot Mix Asphalt (HMA) in the technical specifications are changed to 1/2 inch Type A HMA (PG 64-10)
3. On Sheet C-3.1 of the Plans, Detail 1 "Typical Asphalt Driveway Section", the Aggregate Base thickness is changed to 12 inches.
4. On Sheet E-102 of the Plans, Reference Note No. 6 is changed to read (See Attached Revised Sheet E-102):

3/4" C W/ (2) #12 AWG & (1) #10 GND.

5. Class 2 Aggregate Base is required under all asphalt and concrete surfaces. Payment for the aggregate base is under Bid Item No. 13 of the revised Bid Schedule. All references on the plans or in the technical specifications are changed as follows:
 - a. Asphalt Pavement: 4 inches of hot mix asphalt over 12 inches of aggregate base.
 - b. Sidewalks: 4 inches of concrete over 4 inches of aggregate base.
 - c. Commercial Driveways: 6 inches of concrete over 6 inches of aggregate base.
6. Bid Item No. 44 "480V to 208V 150 kVA Step Down Transformer" includes the cost of the contractor-supplied equipment.

B. QUESTIONS RECEIVED

Q1: *On E-002 transformer is called out as 150 Kva, according to Addendum 1, Transformer purchased is 75 Kva. Do we need to provide a cost for a 150 Kva Transformer?*

A: The incorrect transformer was purchased by the City. The Contractor will be responsible for supplying the correct transformer. The cost of the transformer is included in Bid Item No. 44 (Number 6 above).

Q2: *On E-102 reference note 6, calls for 2 @ #2 & 1 @ #10 in a 3/4" conduit. This won't fit per code.*

A2: See Number 4 above and the attached revised plan sheet.

Contractors shall note the acknowledgment of this addendum on page 4 of the Bid Documents (Bid Schedule).

The Bid Package can be found online at <https://cityofguadalupe.org>. On the Home page, scroll down to Bid Packages and follow the link.

Sincerely,
Jeff van den Eikhof, PE
City Engineer

ATTACHMENT NO. 1

REVISED BID SCHEDULE

PROPOSAL
TO
THE CITY OF GUADALUPE
FOR
303 SITE IMPROVEMENTS – EV/BUS CHARGING FACILITY PROJECT
CITY PROJECT NO. 2025-06

NAME OF BIDDER _____

BUSINESS P.O. BOX _____

CITY, STATE, ZIP _____

BUSINESS STREET ADDRESS _____

CITY, STATE, ZIP _____

TELEPHONE NO.: _____

FAX NO.: _____

EMAIL ADDRESS: _____

LICENSE NUMBER AND TYPE: _____

DIR NUMBER: _____

The work for which this Proposal is submitted is for construction in accordance with the Special Provisions (including the payment of not less than the State General Prevailing Wage Rates or the Federal minimum wage rates when set forth herein), the Plans described below, including any addenda thereto, the contract annexed hereto, and also in accordance with the Caltrans Standard Specifications dated 2018, and the City of Santa Maria Standard Specifications (adopted by the City of Guadalupe on June 23, 2009, pursuant to Resolution No. 2009-24) insofar as the same may apply, specifications which may be referred to in the Special Provisions or project plans, and the Labor Surcharge And Equipment Rental Rates in effect on the date the work is accomplished.

The Technical Specifications for the work to be done are entitled:

CITY OF GUADALUPE, CALIFORNIA;

303 SITE IMPROVEMENTS – EV/BUS CHARGING FACILITY PROJECT

The Bidder's attention is directed to Section 2, "Proposal Requirements and Conditions," of the Contract Documents.

The undersigned as Bidder declares that he/she has carefully examined the location of the proposed work above described, read and examined the Contract Documents, and Addendum/Addenda (List Addenda Received: ____, ____, ____, ____) therefore, read the Notice to Contractors, the Proposal Requirements, including the Caltrans Standard Specifications, and hereby proposes and agrees, if this Proposal is accepted by the City, to furnish all materials and services required to do all the work required to complete the said construction in accordance with the Contract Documents in the time stated herein, for the unit prices given below:

BID SCHEDULE

ITEM NO.	BID ITEMS	PAYMENT REFERENCE	TOTAL QUANTITIES	UNIT	UNIT PRICE	TOTAL COST
BASE BID						
1	Mobilization	10-2.02	1	LS		
CIVIL						
2	Siltation Fences	015723	500	LF		
3	Concrete Washout	015723	1	EA		
4	Construction Entrance	015723	2	EA		
5	Check Dams	015723	7	EA		
6	Street Sweeping and Vacuuming	015723	1	LS		
7	Storm Drain Inlet Protection	015723	10	EA		
8	Site Clearing	311000	1	LS		
9	Earth Moving** (Cumulative)	312000	475	CY		
10	1/2" HMA Type A (PG 64-10)	321216	315	TN		
11	Commercial Driveway (20' Wide)	321313	420	SF		
12	Sidewalk	321313	980	SF		
13	Class 2 Aggregate Base	321216	950	TN		
14	Concrete Curbs	321613	500	LF		
15	Pavement Markings	321723	100	LF		
16	Gate Operators	323111	2	EA		
17	Chain Link Fences and Gates	323113	320	SF		
18	Storm Drainage Utility Pipe	334000	200	LF		
19	Plastic Drain Grates	334000	4	EA		
20	Ductile Iron Drain Grates	334000	2	EA		
21	Bioretention Basin	334726	530	SF		
ELECTRICAL						
22	Common Electrical Work	260500	1	LS		
23	Low Voltage Electrical Copper Conductors	260519	1	LS		
24	Electrical Connectors	260519	1	LS		
25	Electrical Equipment Labeling	260519	1	LS		
26	Conductor Insulation Testing	260519	30	LF		
27	Cu Ground Rod Installation	260526	3	EA		
28	Ufer Ground Installation	260526	1	EA		

ITEM NO.	BID ITEMS	PAYMENT REFERENCE	TOTAL QUANTITIES	UNIT	UNIT PRICE	TOTAL COST
29	Ground Resistance Testing	260526	3	EA		
30	PVC Schedule 40 Conduit	260533	1	LOT		
31	PVC Schedule 80 Conduit	260533	1	LOT		
32	Galvanized Rigid Steel Conduit	260533	1	LOT		
33	Electrical Metallic Tubing	260533	1	LOT		
34	Flexible Metal Conduit	260533	1	LOT		
35	Liquid Tight Flexible Metal Conduit	260533	1	LOT		
36	Electrical Outlet Boxes	260533	1	LOT		
37	Electrical Junction and Pull Boxes	260533	1	LOT		
38	Conduit Fittings	260533	1	LOT		
39	Conduit Stubs	260533	1	LOT		
40	Concrete Pads	260533	3	EACH		
41	Trenching and Backfilling	260533	1	LOT		
42	Sawcutting / Patching	260533	1	LOT		
43	Electric Utility Company Work	260546.13	1	LS		
44	480V to 208V 150KVA Step Down Transformer	262200	1	EA		
45	277/480V, 800AMP Main Electric Service Equipment	262413	1	EA		
46	120/208V, 400AMP Distribution Panelboard	262416	1	EA		
47	Wood Backboard Installation – complete	262416	1	EA		
48	WIU GFCI Receptacle	262726	1	EA		
49	Site Lighting Fixture Type S1	265600	1	EA		
50	Site Lighting Fixture Type S2	265600	2	EA		
51	Site Lighting Fixture Type S3	265600	1	EA		
52	Exterior Lighting Control Timeclock and Photocell	265600	1	EA		
53	Lighting Acceptance Testing	265670	1	LS		
54	EV Charging Station Connections	Dwg. E-101	5	EA		
55	Gate Operator Equipment Connections	Dwg. E-101	2	EA		
56	11" x 17" Concrete Pullbox	Dwg. E-101	2	EA		
57	PG&E Concrete Transformer Pad	Dwg. E-101	1	EA		
58	PG&E Primary Conduits	Dwg. E-101	250	LF		
59	PG&E Secondary Conduits	Dwg. E-101	220	LF		
60	Concrete Pole Base	Dwg. E-101	4	EA		
TOTAL BASE BID (ITEMS 1 THROUGH 13)						

*Payment references are per specifications provided and per civil engineering plans by Ashley & Vance Engineering, Inc. dated 7/18/2025 and electrical engineering plans by Thoma Electric, Inc. dated 4/21/2025.

** Estimated earthwork quantities are based on the approximate difference between existing grades and proposed finished grades or pavement subgrades, as indicated on the plans, and should vary according to these factors and losses.

TOTAL BASE BID IN WORDS:

Total Base Bid Amount shall be shown in both words and figures.

The award of the contract, if it be awarded, will be to the lowest responsible bidder whose proposal complies with all the requirements prescribed. Bids will be compared by the Total Mathematical Bid as determined by the Engineer. The Total Mathematical Bid is the summation of all required bid items, excluding bid alternates. Bid items are calculated by multiplying the Engineers Estimate quantities by the unit bid prices. In the case of a discrepancy between the Total Mathematical Bid and the total bid written above, the Total Mathematical Bid shall govern.

The bidder to whom the contract is awarded agrees to enter into a contract with the City of Guadalupe within **fifteen (15) days** after the date of the Notice of Award, and to commence work within **ten (10) working days** after the date of the Notice To Proceed, and to diligently prosecute the work to completion within the Time of Contract shown on the cover of the Project Manual.

The undersigned understands and agrees that the City of Guadalupe will not be responsible for any errors or omissions on the part of the undersigned in preparing and submitting this Proposal.

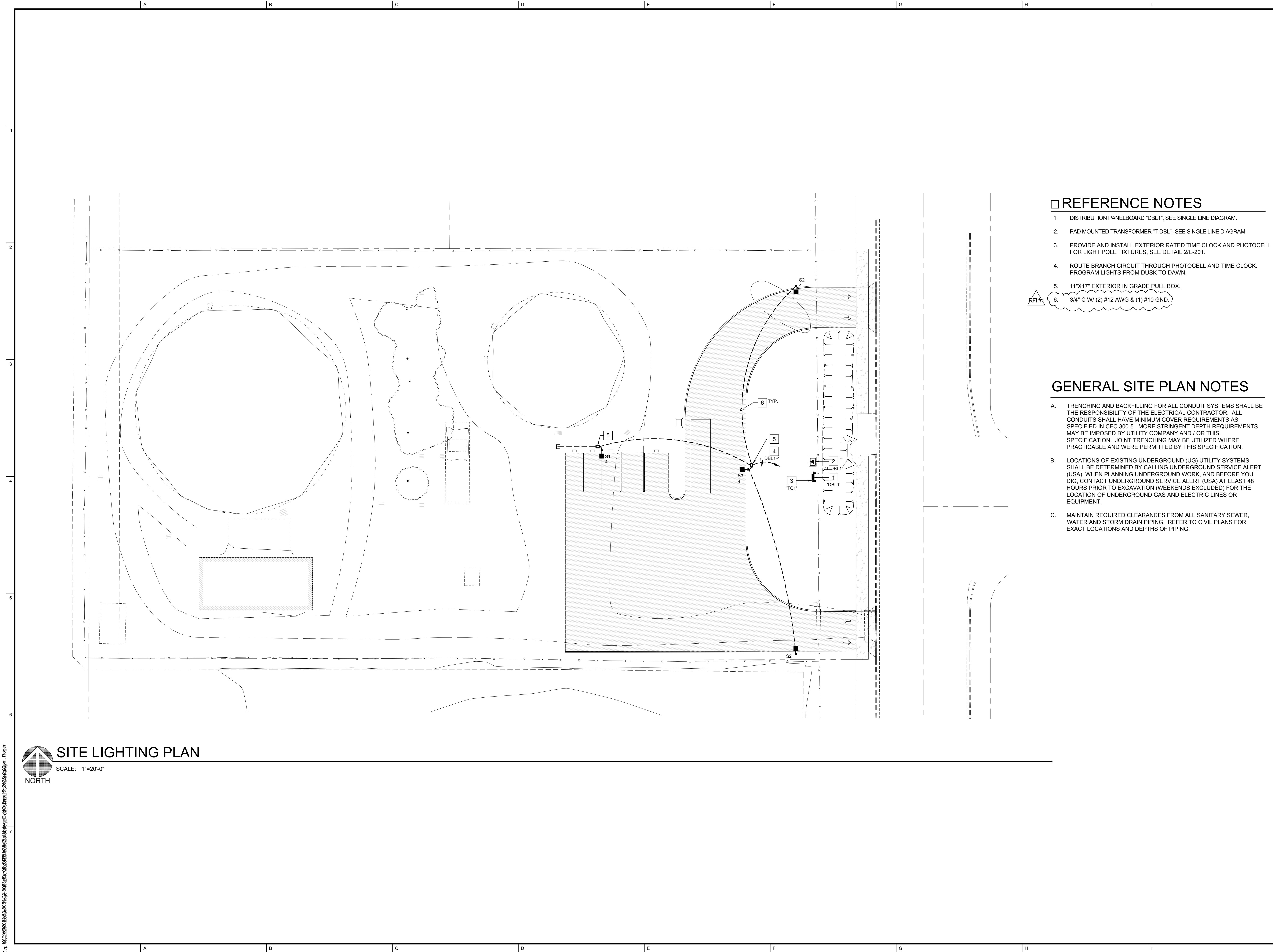
Signature

Title

Date

ATTACHMENT NO. 2

REVISED PLAN SHEET E-102



REFERENCE NOTES

- 1. DISTRIBUTION PANELBOARD "DBL1", SEE SINGLE LINE DIAGRAM.
- 2. PAD MOUNTED TRANSFORMER "T-DBL", SEE SINGLE LINE DIAGRAM.
- 3. PROVIDE AND INSTALL EXTERIOR RATED TIME CLOCK AND PHOTOCELL FOR LIGHT POLE FIXTURES, SEE DETAIL 2/E-201.
- 4. ROUTE BRANCH CIRCUIT THROUGH PHOTOCELL AND TIME CLOCK. PROGRAM LIGHTS FROM DUSK TO DAWN.
- 5. 11"x17" EXTERIOR IN GRADE PULL BOX.
- 6. 3/4" C W/ (2) #12 AWG & (1) #10 GND.

GENERAL SITE PLAN NOTES

- A. TRENCHING AND BACKFILLING FOR ALL CONDUIT SYSTEMS SHALL BE THE RESPONSIBILITY OF THE ELECTRICAL CONTRACTOR. ALL CONDUITS SHALL HAVE MINIMUM COVER REQUIREMENTS AS SPECIFIED IN CEC 300-5. MORE STRINGENT DEPTH REQUIREMENTS MAY BE IMPOSED BY UTILITY COMPANY AND / OR THIS SPECIFICATION. JOINT TRENCHING MAY BE UTILIZED WHERE PRACTICABLE AND WERE PERMITTED BY THIS SPECIFICATION.
- B. LOCATIONS OF EXISTING UNDERGROUND (UG) UTILITY SYSTEMS SHALL BE DETERMINED BY CALLING UNDERGROUND SERVICE ALERT (USA). WHEN PLANNING UNDERGROUND WORK, AND BEFORE YOU DIG, CONTACT UNDERGROUND SERVICE ALERT (USA) AT LEAST 48 HOURS PRIOR TO EXCAVATION (WEEKENDS EXCLUDED) FOR THE LOCATION OF UNDERGROUND GAS AND ELECTRIC LINES OR EQUIPMENT.
- C. MAINTAIN REQUIRED CLEARANCES FROM ALL SANITARY SEWER, WATER AND STORM DRAIN PIPING. REFER TO CIVIL PLANS FOR EXACT LOCATIONS AND DEPTHS OF PIPING.



P.O. Box 1167 - 3562 Empleo St.
San Luis Obispo, CA 93406
Phone: (805) 543-3850
Fax: (805) 543-3829
cad@thomaelec.com



Plan Prepared By:

EXPIRES: 09/30/26
THOMA #23-8053

The use of these plans and specifications shall be restricted to the original site for which they were prepared and publication thereof is expressly limited to such use. Reproduction or publication by any method, in whole or in part, is prohibited. Title to these plans and specifications remain with Ashley & Vance Engineering, Inc. without prejudice. Visual contact with these plans and specifications shall constitute prima facie evidence of the acceptance of these restrictions.

Engineer of Record:

SITE IMPROVEMENTS FOR PARKING AND
ELECTRIC VEHICLE CHARGING
303 OBISPO STREET
GUADALUPE, CA 93434
SITE LIGHTING PLAN

Revisions:	
△	
△	
△	
△	
△	
Project Engineer: LR	
Ext:	
Project Manager: LR	
Date: APRIL 21, 2025	Scale: PER PLAN
AV Job No:	Sheet Size: 24" x 36"

E-102

SITE LIGHTING PLAN
SCALE: 1"=20'-0"

Sep: 16/10/2025 10:29:11 AM C:\Users\jthoma\OneDrive\Documents\Projects\303 Obispo Street\Site Lighting Plan\Site Lighting Plan.dwg Roger